

HardiePlank™ weatherboard

What is it?

A no-fuss, site-painted weatherboard available in a range of different profiles, from contemporary to traditional. The range includes:

HardiePlank™ Woodgrain. Traditional woodgrain

HardiePlank™ Smooth. Modern straight lines

HardiePlank™ Old Style. A smooth surface and rebated edges to create shadow lines

HardiePlank™ Rusticated. Pre-primed with a subtle timber grain, and rebated edges to create shadow lines.

Where do you use it?

As an external cladding in residential single and medium-density homes, including alterations and additions, where a cost-effective traditional or contemporary weatherboard look is required. Ideal for full wrap or composite construction designs on either timber or light gauge steel framed homes.

What are the key benefits?

DESIGN FLEXIBILITY. A wide variety of looks can be achieved with the varying profiles in the range.

VERSATILITY. It can also be used as bracing.*

SECURITY. HardiePlank weatherboard is resistant to damage from termites, rot and fire.**



What are the accessories?

Accessory	Code	Page
HardieBlade™ Saw Blade 185mm	300660	51
HardieBlade™ Saw Blade 254mm	303375	51
HardieDrive™ Screws 32mm long	305532	51
HardieDrive™ Screws 40mm long	305533	51
HardiePlank™ Aluminium External Corner Soaker for 230mm	305514	51
HardiePlank™ Aluminium External Corner Soaker for 300mm	305515	51
HardiePlank™ Aluminium Internal Corner Soaker for 230mm	305516	51
HardiePlank™ Aluminium Internal Corner Soaker for 300mm	305517	51
HardiePlank™ Galvanised Soaker Jointer† for 205mm	305523	51
HardiePlank™ Galvanised Soaker Jointer† for 230mm	305522	51
HardiePlank™ Galvanised Soaker Jointer† for 300mm	305527	51
HardiePlank™ Galvanised Stud Clip+	305524	52
HardiePlank™ Smooth PVC Jointer for 230mm	305548	52
HardiePlank™ Smooth PVC Jointer for 300mm	305549	52
HardiePlank™ Woodgrain PVC Jointer for 230mm	305550	52
HardiePlank™ Woodgrain PVC Jointer for 300mm	305551	52
HardiePlank™ Zincalume Footmould	305528	52
James Hardie™ Aluminium Snap On Corner	305513	53
James Hardie™ Fibreshears	300653	53
James Hardie™ Joint Sealant^ 300ml cartridge	305534	54
James Hardie™ Joint Sealant^ 600ml sausage	305672	54
James Hardie™ Score and Snap Knife	305576	55

What are the sizes?

Product code	Profile	Length (mm)	Width (mm)	Thickness (mm)	Mass (kg/m²)
403080	Woodgrain	4,200	230	7.5	11.06
403081	Woodgrain	4,200	300	7.5	11.79
400265	Smooth	4,200	230	7.5	10.90
400266	Smooth	4,200	300	7.5	11.31
400371	Old Style	4,200	205	7.5	11.67
400378	Rusticated	4,200	205	7.5	11.67

Selling units per pack: 120 lengths per full pack, 60 lengths per half pack

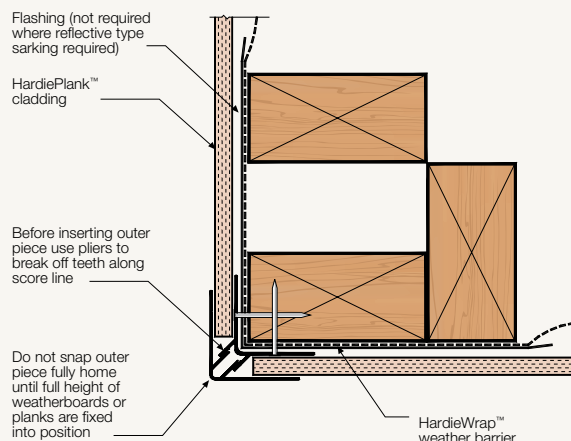
Note All dimensions and masses provided are approximate only and subject to manufacturing tolerances. Masses are based on equilibrium moisture content of product.

* When installed in accordance with James Hardie's *Structural Bracing Application Guide*.

** When installed and maintained correctly and to the extent set out in James Hardie's published literature current at the time of installation.

† Not suitable for coastal applications, see installation manual for further information. ^ Not to be used in fire applications.

External corner option*



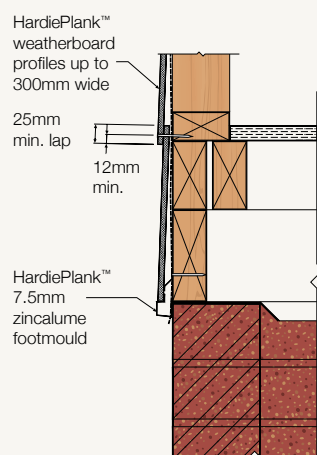
HardiePlank™ Woodgrain weatherboard with traditional woodgrain finish.



HardiePlank™ Smooth weatherboard with straight modern lines.



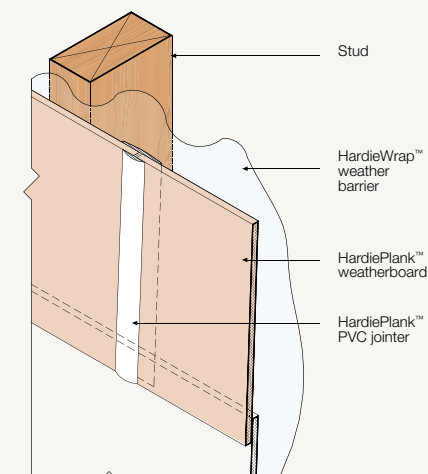
Nail spacings and lap



HardiePlank™ Old Style weatherboard with a smooth surface and rebated edges to create shadow lines.



PVC jointer



HardiePlank™ Rusticated weatherboard pre-primed with a subtle timber grain and rebated edges to create shadow lines.

