



creason®

perforated plasterboard



creason is part of Siniat's range of acoustic plasterboard. **creason** offers great acoustic performance with beautiful aesthetics and incorporates CAPT'AIR® technology for improved indoor air quality.

creason is ideal for use in a range of internal applications where controlling the sound reverberation time is required in areas such as offices, shopping centres, airports, schools, hospitals, conference halls, lecture theatres and libraries. **creason** can also be installed in residential ceilings to provide noise absorption in open plan living areas and home theatres. **creason** can also be used at the top of internal walls (above traffic areas) where control of sound absorption and reverberation time is required.

The acoustic performance of **creason** is achieved through a combination of sound diffusion (reflected sound energy is spread out) and sound absorption (sound energy is removed as it travels through the perforation holes and acoustic fleece backing).

Additional optional insulation improves the sound absorption. The result is a high quality sound experience with excellent speech intelligibility.

The **creason** range is installed like regular plasterboard.

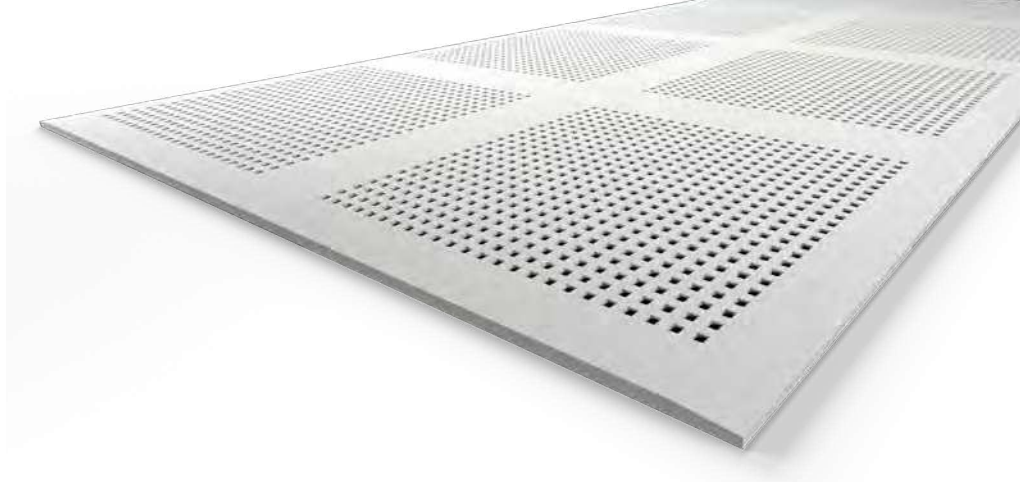
application

creason is mostly used in ceilings but it can also be used on the top of internal walls (above traffic areas) where control of sound absorption and reverberation time is required.

It is ideal for ceilings in large rooms with hard surfaces such as school halls, open plan living areas and home theatres.

key benefits

- Excellent broadband sound diffusion and absorption improve the acoustics in large open areas
- Two tapered edges and high quality precision perforations deliver superior aesthetic internal lining finishes
- Built-in air purifying active CAPT'AIR® technology improves indoor air quality



product information

	thickness (mm)	width (mm)	length (mm)	weight* (kg/m ²)
sheet size	12.5	1200	2400	10
standard patterns	Round R12/25 no.8 Cube C12/25 no.8			
fire hazard properties	Group 1 with an Average Specific Extinction Area <250 m ² /kg determined in accordance with AS 5637.1 as required by NCC C1.10, Clause 4.			
hazards identification	Non-hazardous according to Safe Work Australia Criteria.			

* Weights indicated are nominal. Minimum order quantities and lead times may apply.

performance

Sound Absorption

Excellent broadband sound absorption and diffusion to optimise the reverberation time and improve the overall acoustic environment.

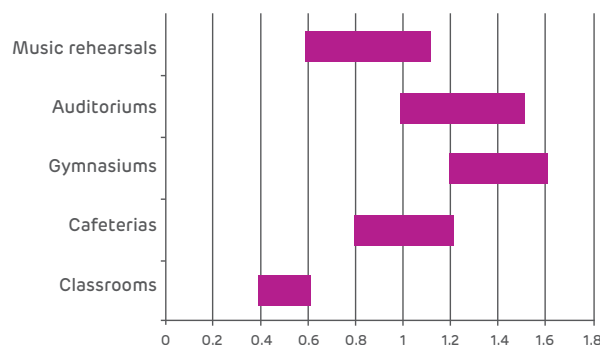
Air Purifying

CAPT'AIR® technology actively captures formaldehyde, improving the air quality inside buildings.

Decorative

Two styles which can easily be installed, interspersed with standard plasterboard.

Suitable Reverberation Times



design	perforation pattern	perforation ratio (%)	absorption (α_w / NRC)	board dimensions		edge type
				width (mm)	length (mm)	2 sides tapered
matrix collection - standard perforation patterns						
round	R12/25 no.8	10.2	0.5 - 0.6	1200	2400	•
cube	C12/25 no.8	16.1	0.6 - 0.8			•

installation

creason must be installed using fasteners only for all wall and ceiling systems. For all plasterboard joints use **siniat paper tape** and apply two coats of **mastabase** or **mastalongset**, followed by a final coat of any Siniat finishing compound.

Care should be taken during joint-setting to avoid blocking of perforations.

painting

Only use roller application for painting **creason**. Roller application applies a uniform texture over the entire surface and ensures the paint does not contact the protective fabric fixed to the back of the plasterboard. Spray application of paint is not permitted.

about us

Siniat is one of the Etex Group's flagship commercial brands, and one of the leading global manufacturers of interior and exterior materials for drywall construction.

The Etex Group is a global family-owned business based in Belgium with a history going back to 1905.

In Australia, Etex has Siniat manufacturing facilities located in Sydney, Melbourne, Bundaberg and Brisbane and supplies steel framing, plasterboard, compounds, cornice and associated products and systems to the Australian building industry through its national distribution network.



All manufacturing plants are certified to the most current versions of the ISO management system standards for Health & Safety, Quality and Environmental Management: ISO 9001:2015 certification for quality management systems, ISO 14001:2015 certification for environmental management systems and ISO 45001:2018 certification for health & safety management systems.



All plasterboard products made in Australia have been independently certified by Global GreenTag to GreenRate Level A. Siniat's certified plasterboard products can achieve 100% Green Star points for sustainable building projects.



Etex Australia Pty Ltd

ABN 61 003 621 010
31 Military Road, Matraville
NSW 2036

siniat.com.au



warranty

Siniat's products are guaranteed by a 10 Year Warranty. For details visit siniat.com.au

technical advice
AU 1300 724 505



All Siniat plasterboard and metal products made in Australia are available under the Siniat Carbon Neutral Opt-In program to help you meet your sustainability goals. Visit siniat.com.au to find out more.

Siniat offers a range of technical solutions at siniat.solutions, for the professional, including:

siniat SELECT®

offers an online system selector and custom design specification proposal, developed by us and catering to your project requirements.

siniat CALCULATE®

is a range of online calculation tools for the professional. Explore siniat.solutions on siniat.com.au.

Disclaimer

Products manufactured and systems designed by Etex Australia Pty Ltd and branded Siniat, are produced in accordance with the Building Code of Australia and relevant Australian Standards. Information in this document is to be used as a guide only and is subject to project approval as many aspects of construction are not comprehensively covered. It is also the responsibility of the project owner to determine if Siniat's products and systems are suitable for the intended application. Etex Australia Pty Ltd will not be held responsible for any claims resulting from the installation of its products or other associated products not in accordance with the recommendations of the manufacturer's technical literature or relevant Australian Standards. Siniat technical information is regularly updated. To ensure this document is current with the latest information, visit siniat.com.au